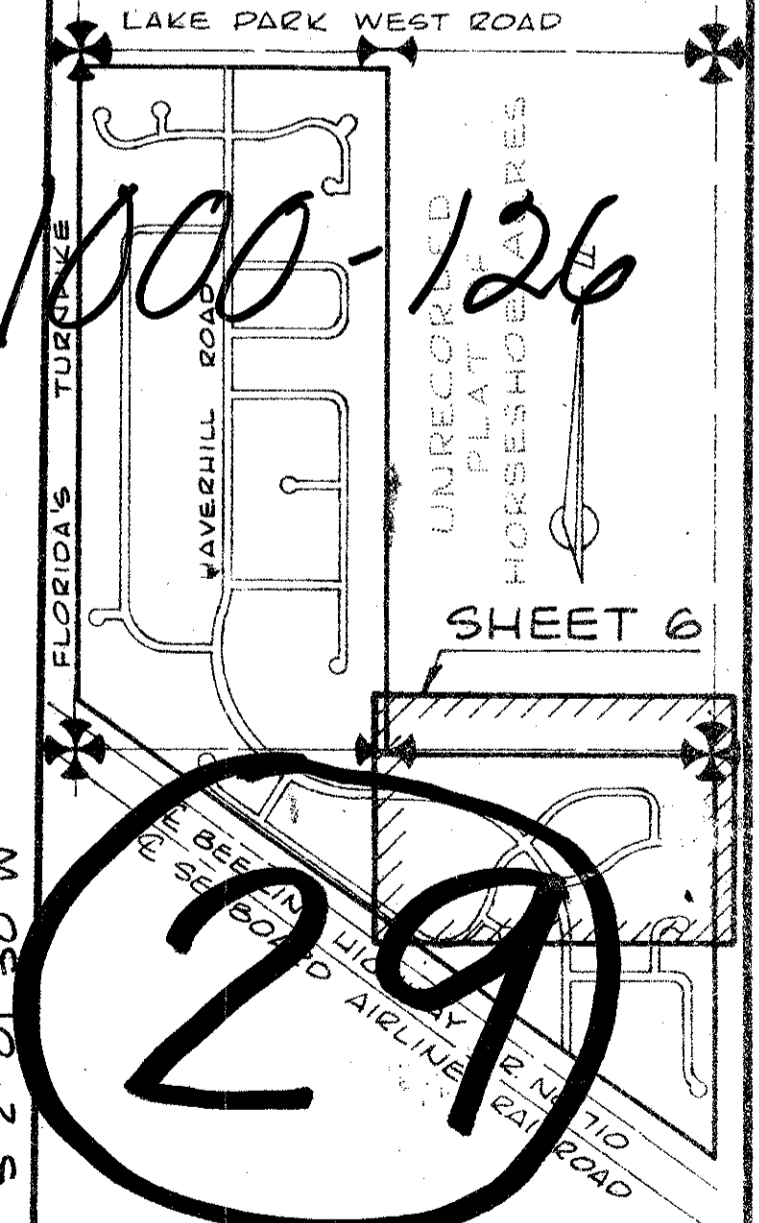
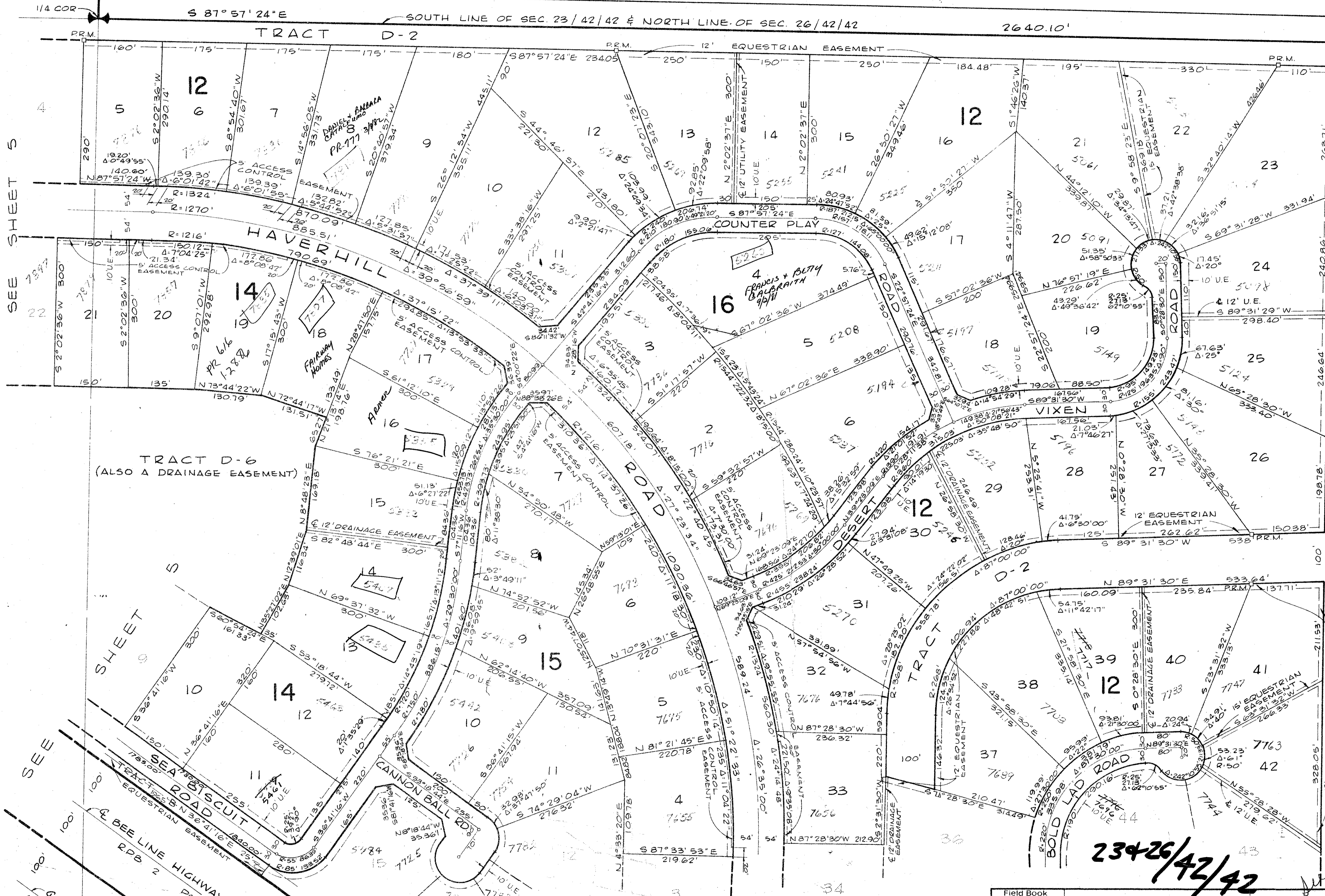


A PLANNED UNIT DEVELOPMENT  
**PLAT OF HORSESHOE ACRES WEST**  
IN 7 SHEETS-SHEET 6 OF 7

UNRECORDED PLAT OF HORSESHOE ACRES

54



76-1058  
Date

ROBERT E. OWEN & ASSOCIATES, INC.  
ENGINEERS · PLANNERS · SURVEYORS  
WEST PALM BEACH  
FLORIDA

PLAT **54** OF **34**  
OF  
**HORSESHOE ACRES WEST**

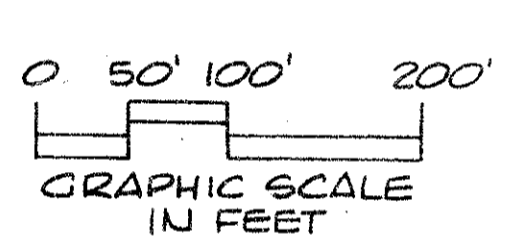
76-1058  
Date  
Scale 1"=100'  
Sheet **6**  
of **7**  
File BF-2253

**HORSESHOE ACRES**

SEE SHEET 5

SEE SHEET 2

NOT PLATTED



34

Field Book	No. L-78 Pg. 49
Design	J.C. VESTE
Drawn	G.L. GOSS
Checked	D.M. WHITE
FILED	H. BLINN

HC 316  
CF 75223